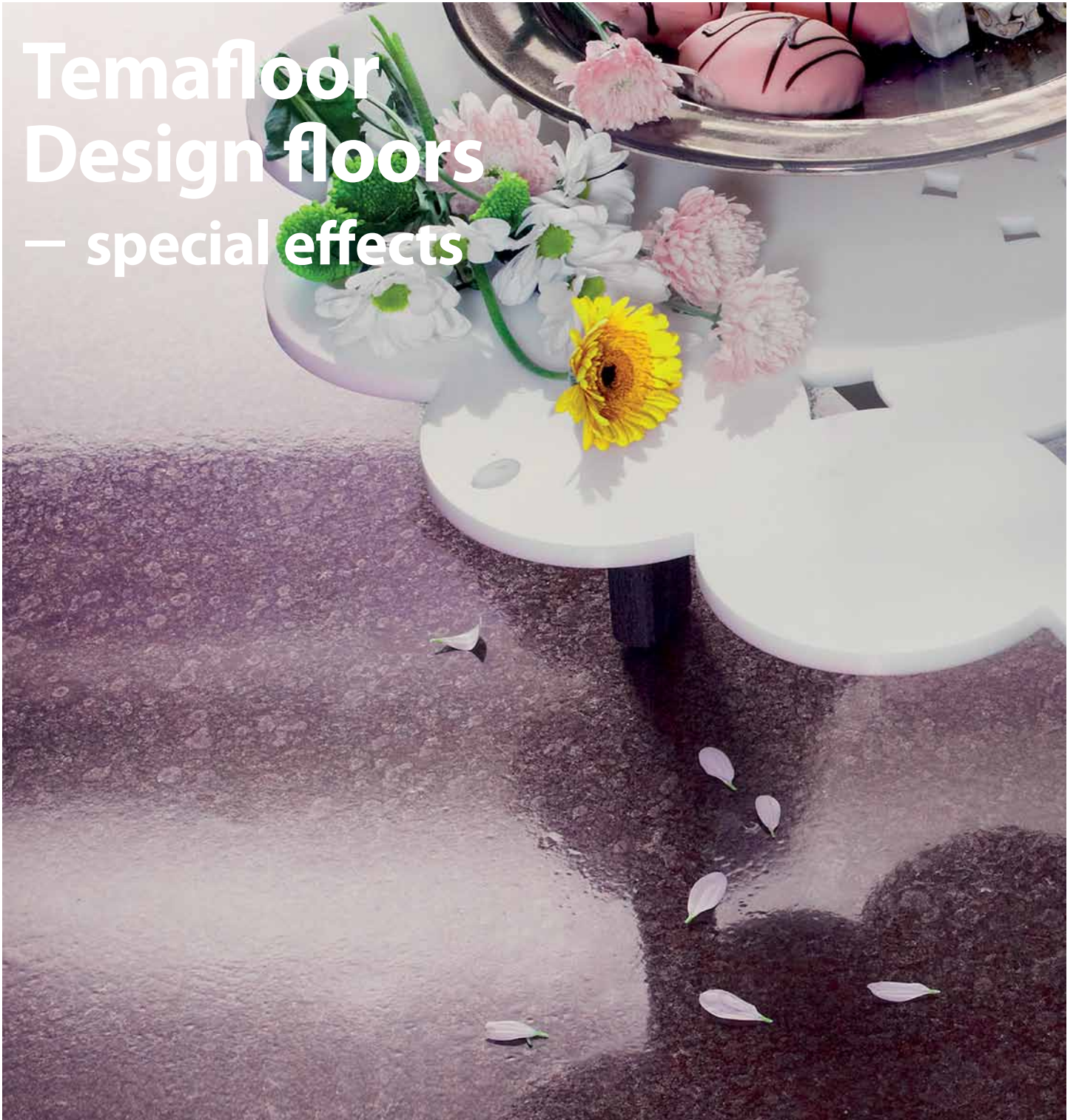


Temafloor Design floors — special effects

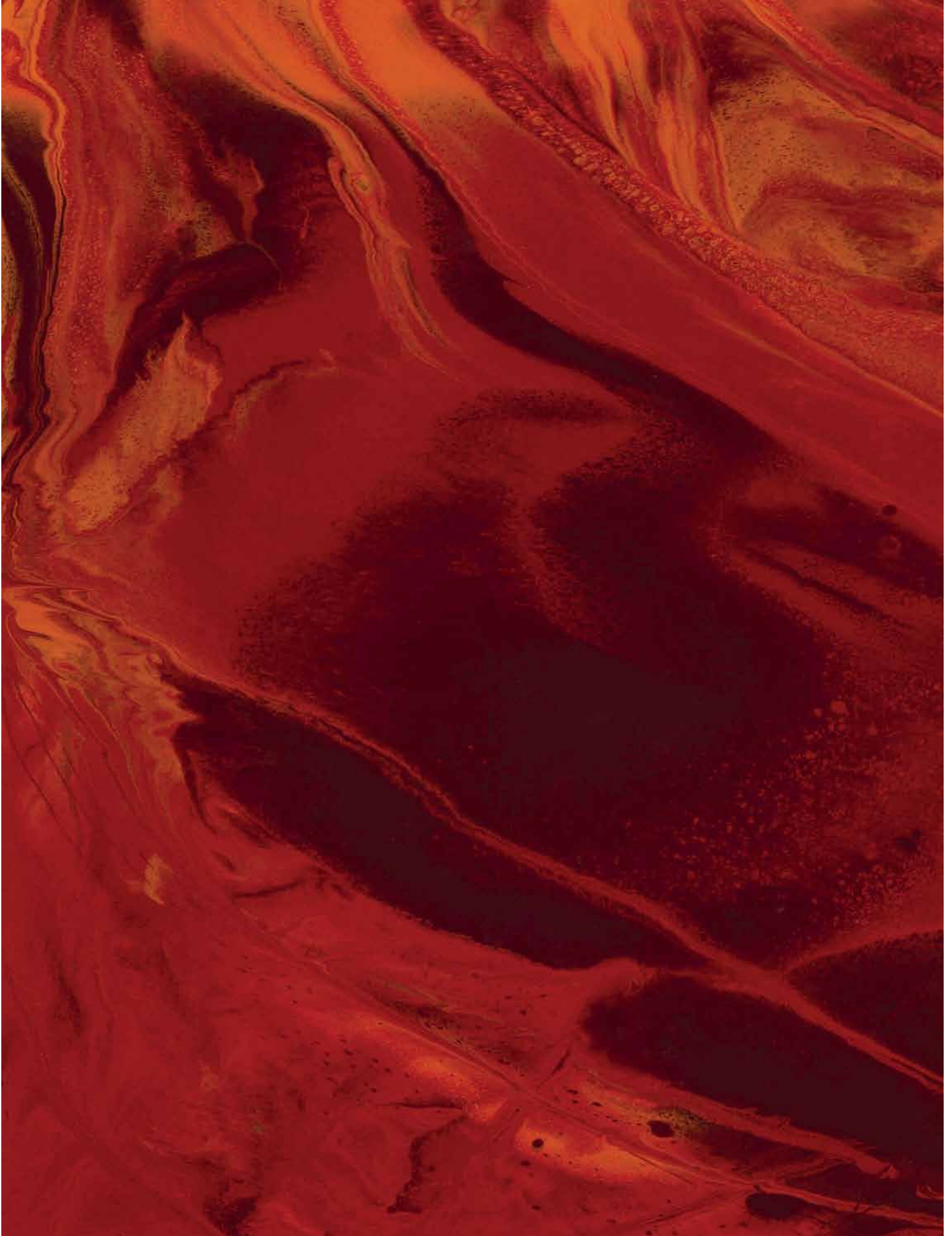


Spatter patterning **Colour:** RAL 840-M



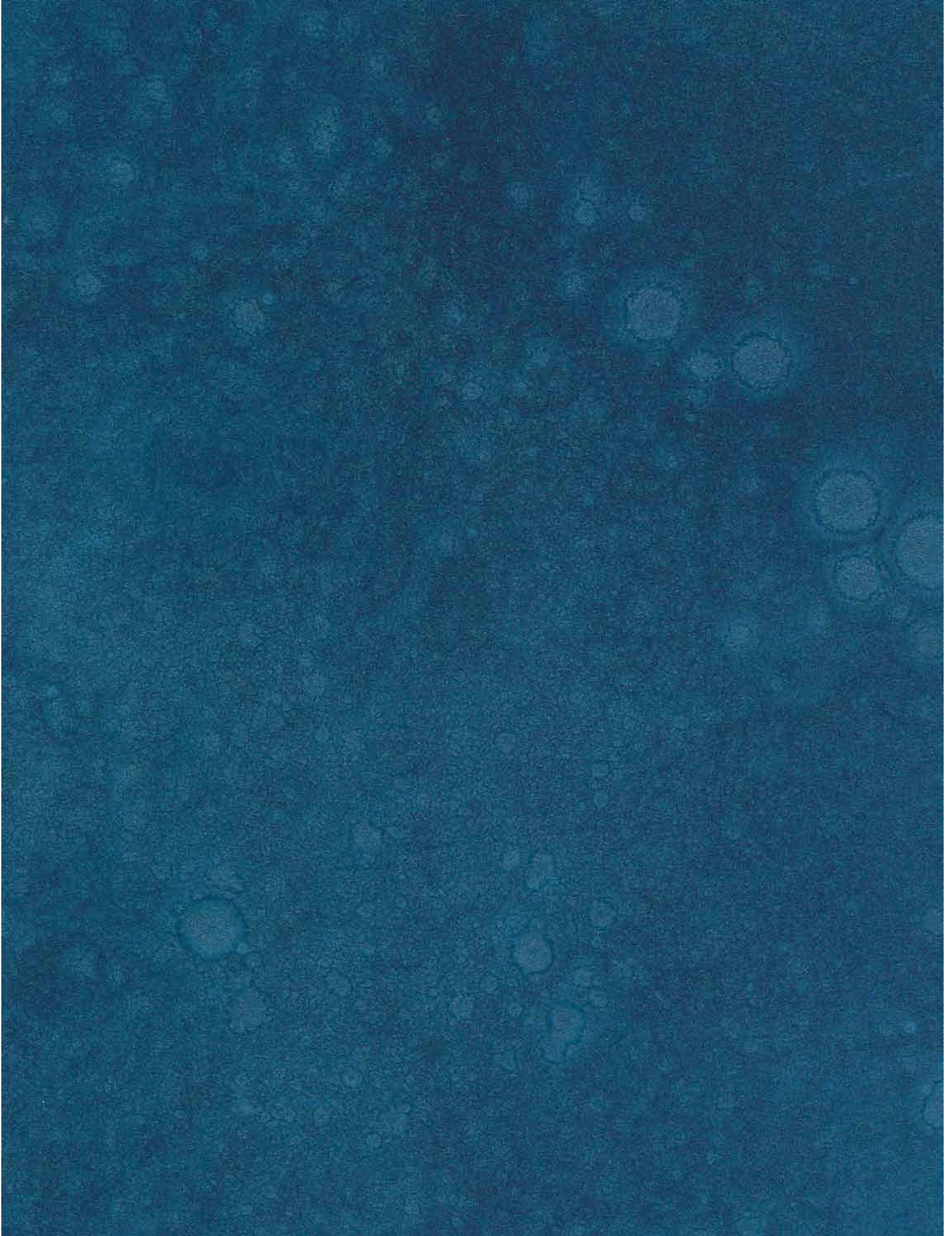
The colour sample are as close to reality as it is technically possible.

Marbling **Colours:** RAL 360-3, RAL 350-4 and RAL 530-5



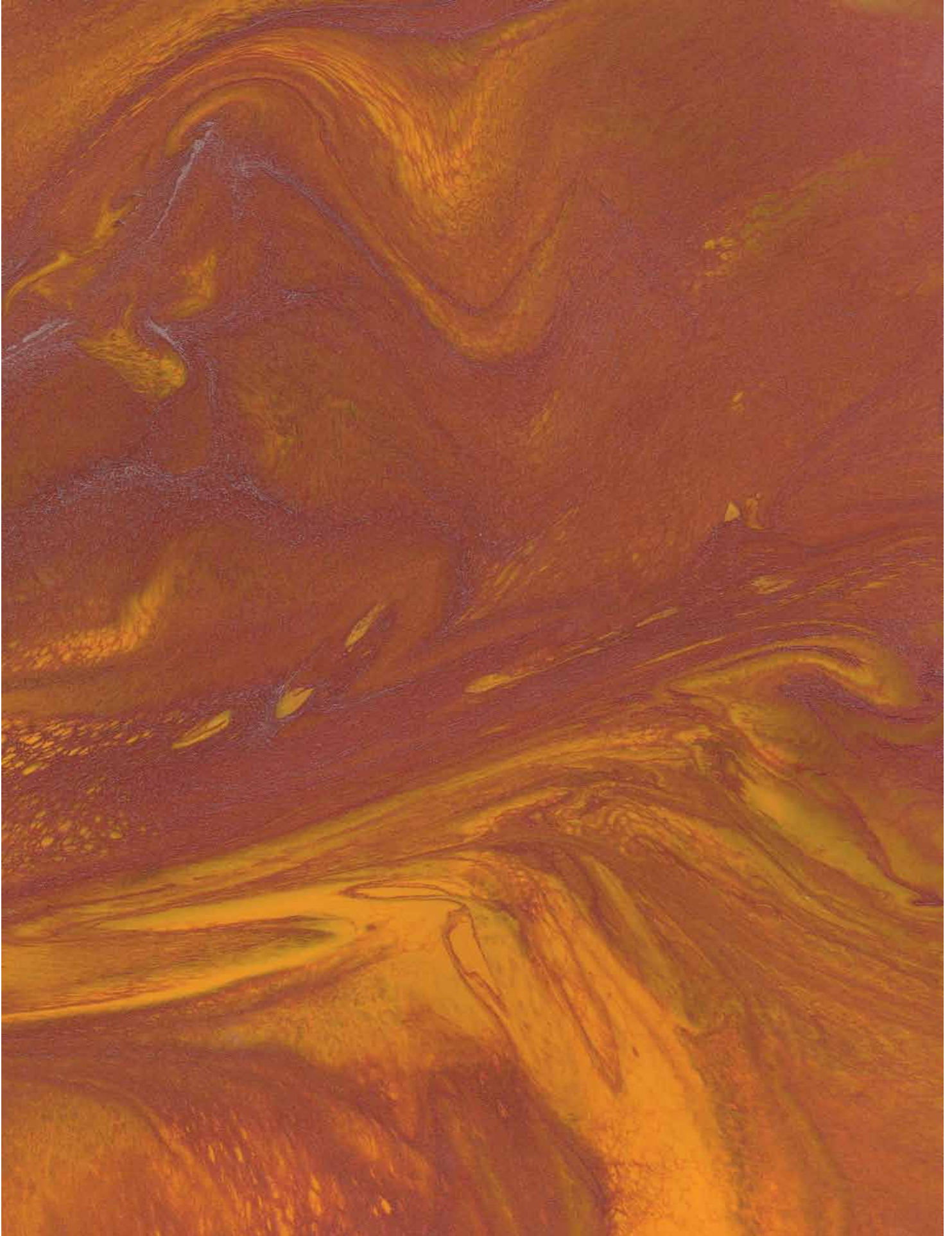
The colour sample are as close to reality as it is technically possible.

Spatter patterning **Colour:** RAL 650-M



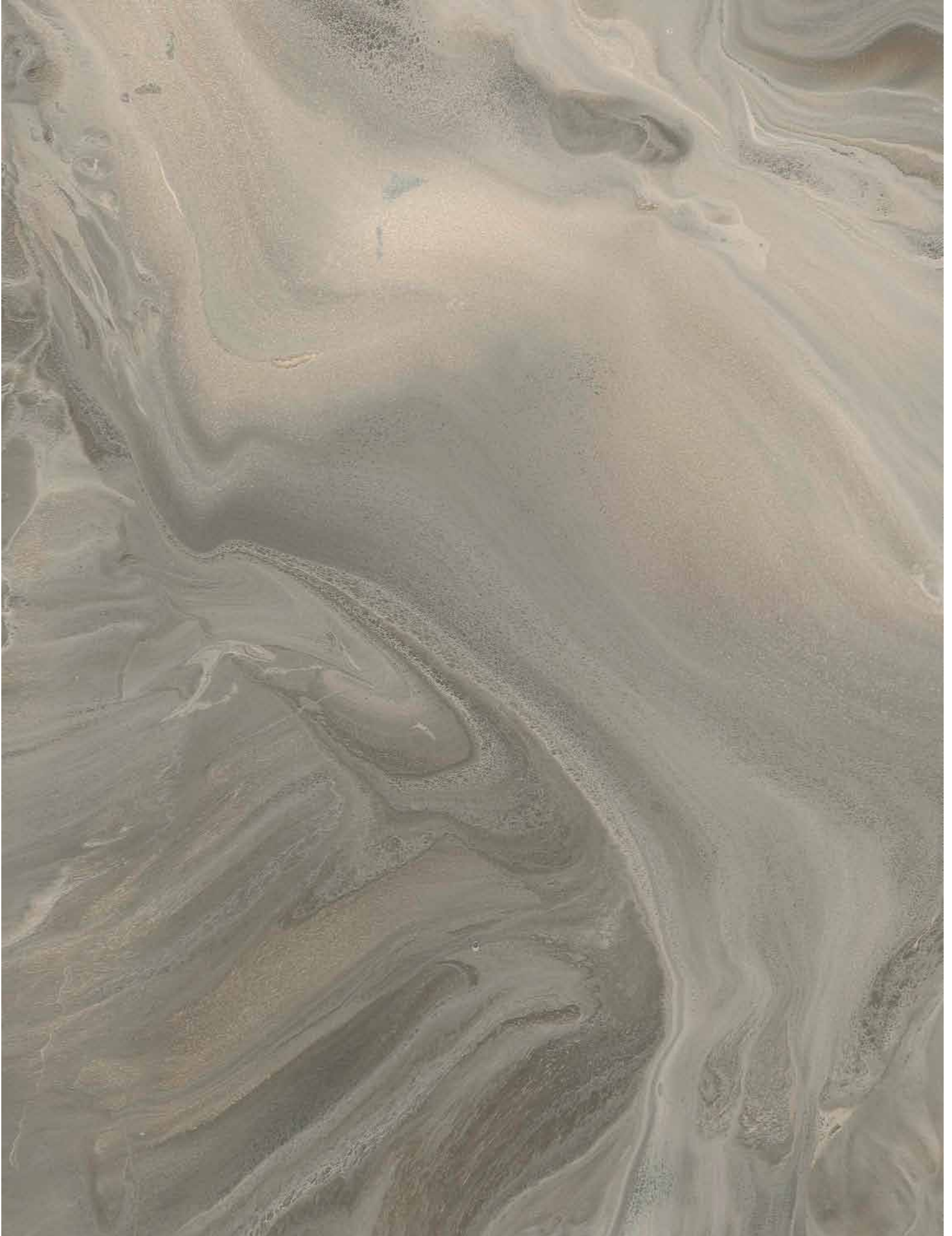
The colour sample are as close to reality as it is technically possible.

Marbling (final light spraying with spatter patterning) **Colours:** RAL 370-5, RAL 390-2 and RAL 350-M



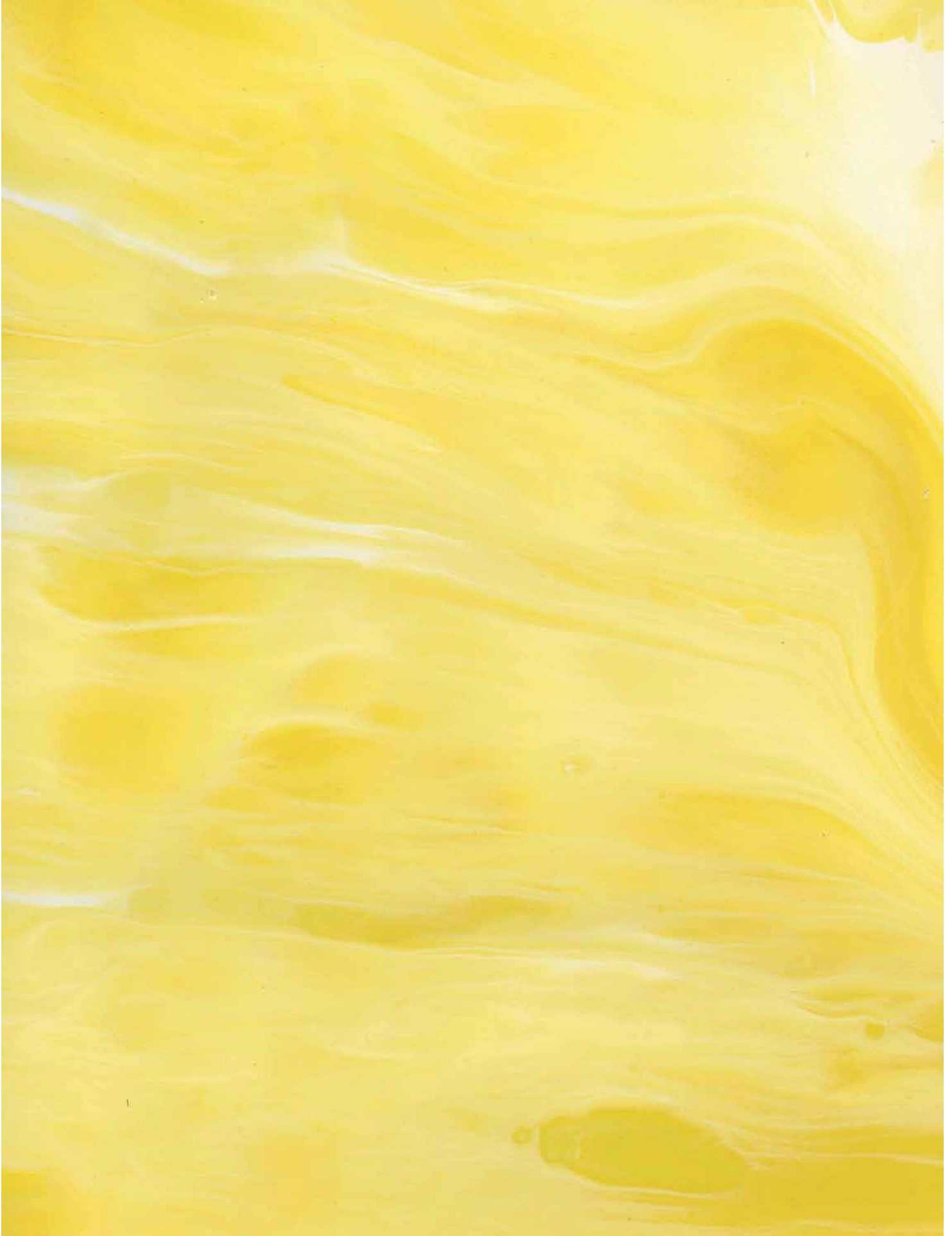
The colour sample are as close to reality as it is technically possible.

Marbling **Colours:** Y395 and S485



The colour sample are as close to reality as it is technically possible.

Marbling **Colours:** RAL 260-4 and RAL 120-5



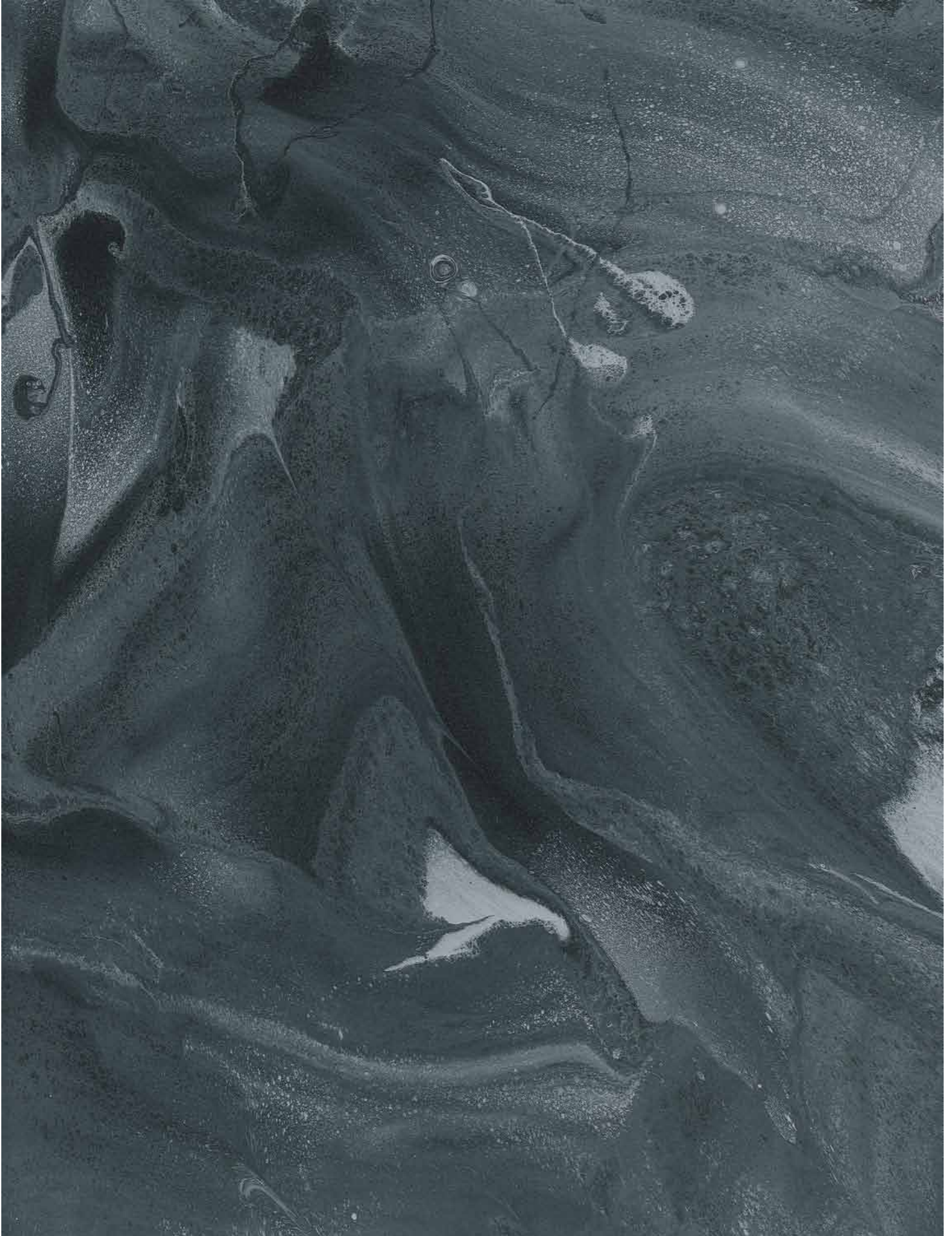
The colour sample are as close to reality as it is technically possible.

Marbling **Colours:** RAL 120-5 and S485



The colour sample are as close to reality as it is technically possible.

Marbling (final light spraying with spatter patterning) **Colours:** RAL 840-1 and RAL 870-1



The colour sample are as close to reality as it is technically possible.

Marbling (final light spraying with spatter patterning) **Colours:** RAL 370-5, RAL 390-2 and RAL 350-M



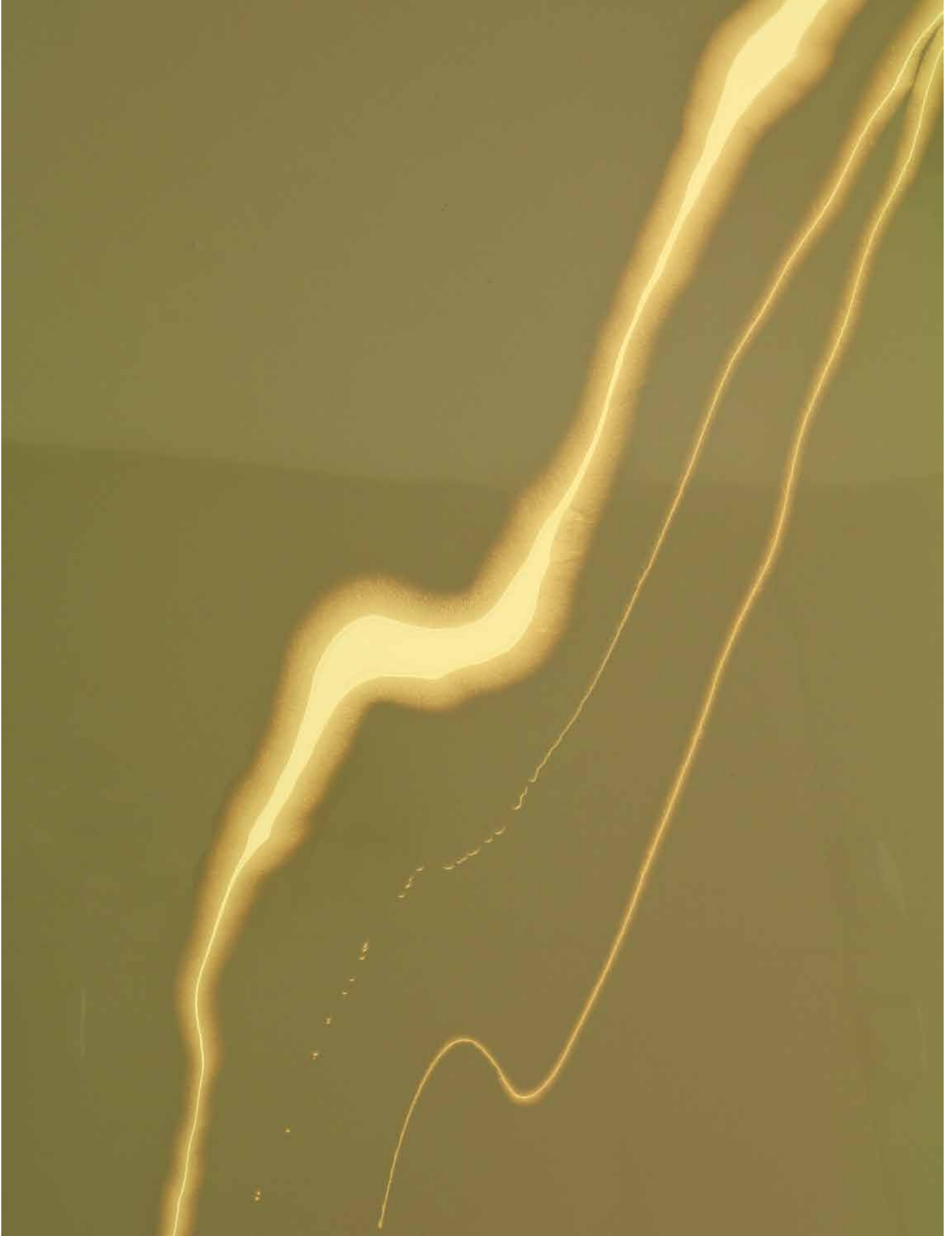
The colour sample are as close to reality as it is technically possible.

Free-hand patterning **Colours:** Y395 (background) and S485 (pattern)



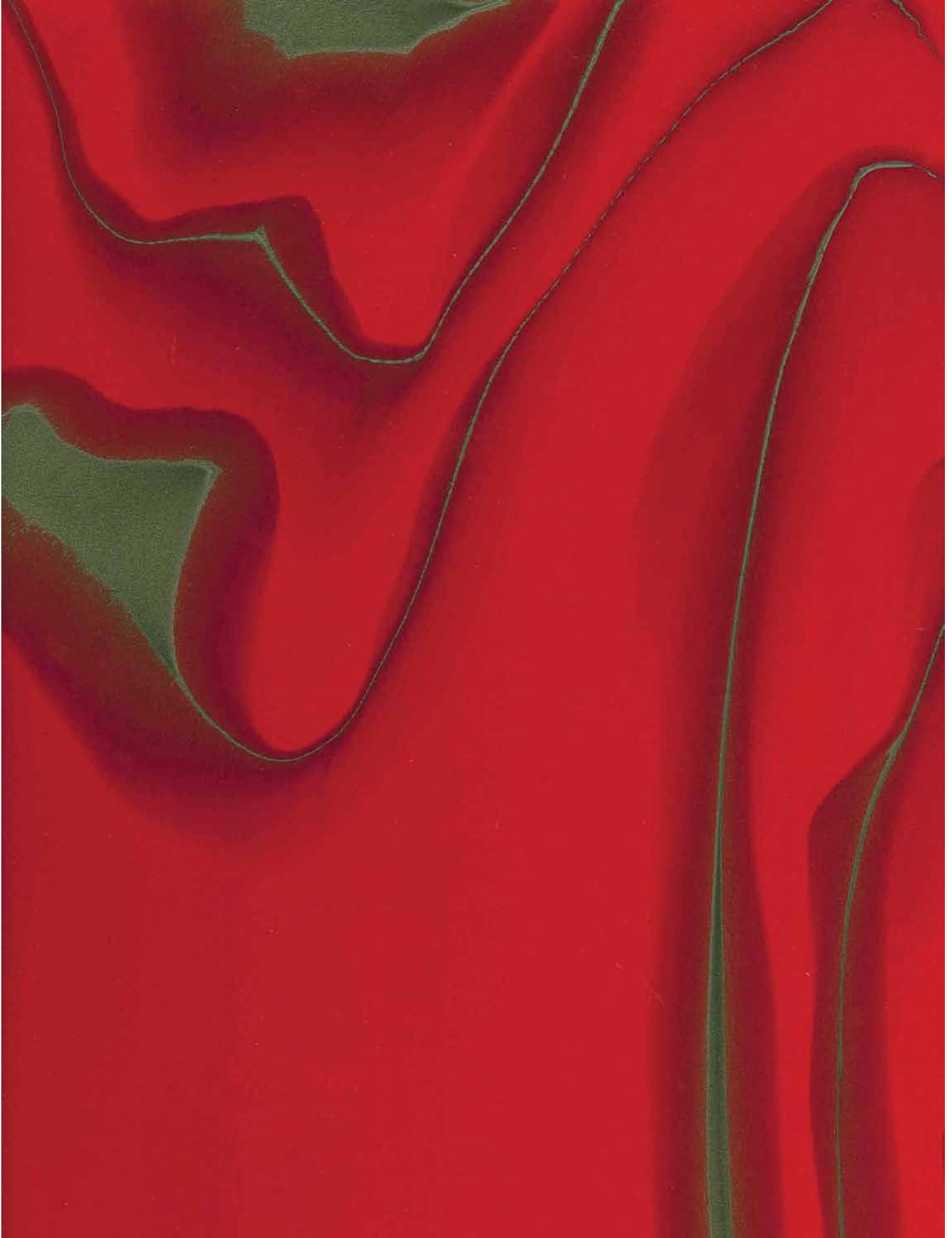
The colour sample are as close to reality as it is technically possible.

Free-hand patterning **Colours:** Y395 (pattern) and S485 (background)



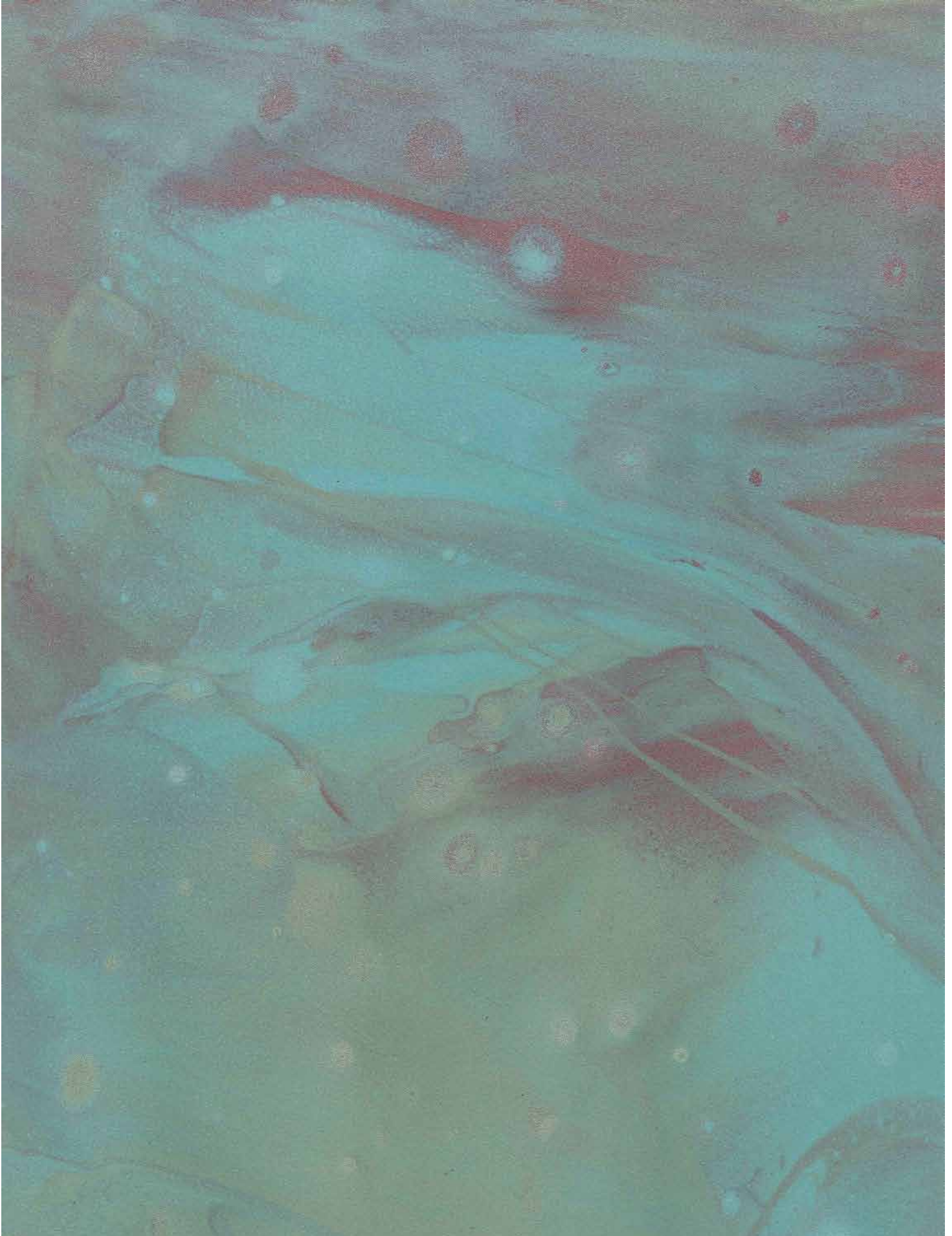
The colour sample are as close to reality as it is technically possible.

Free-hand patterning **Colours:** RAL 440-5 (background) and RAL 270-M (pattern)



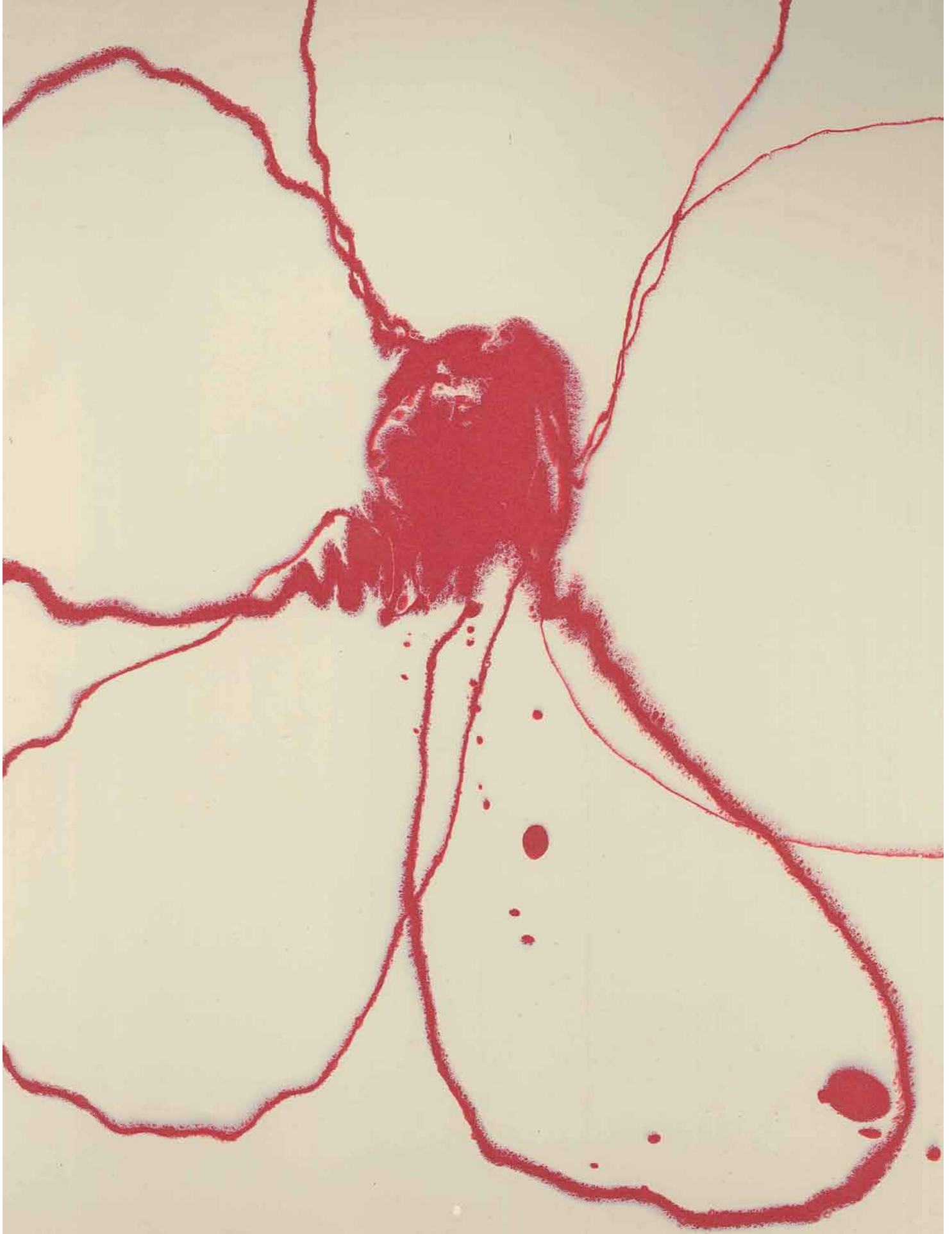
The colour sample are as close to reality as it is technically possible.

Marbling (final light spraying with spatter patterning) **Colours:** RAL 190-M, RAL 210-M and RAL 550-M



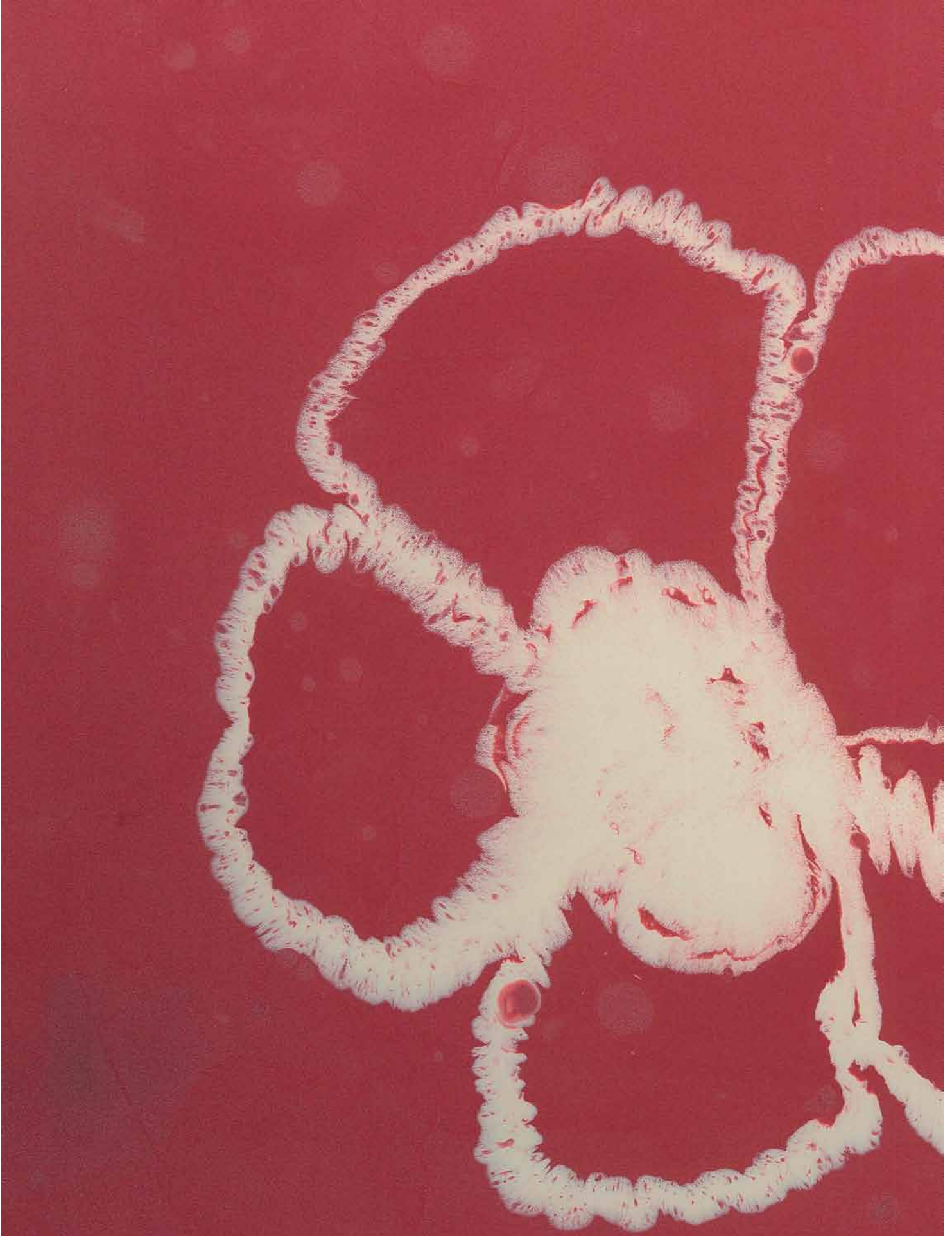
The colour sample are as close to reality as it is technically possible.

Free-hand patterning **Colours:** RAL 470-M and RAL 140-6

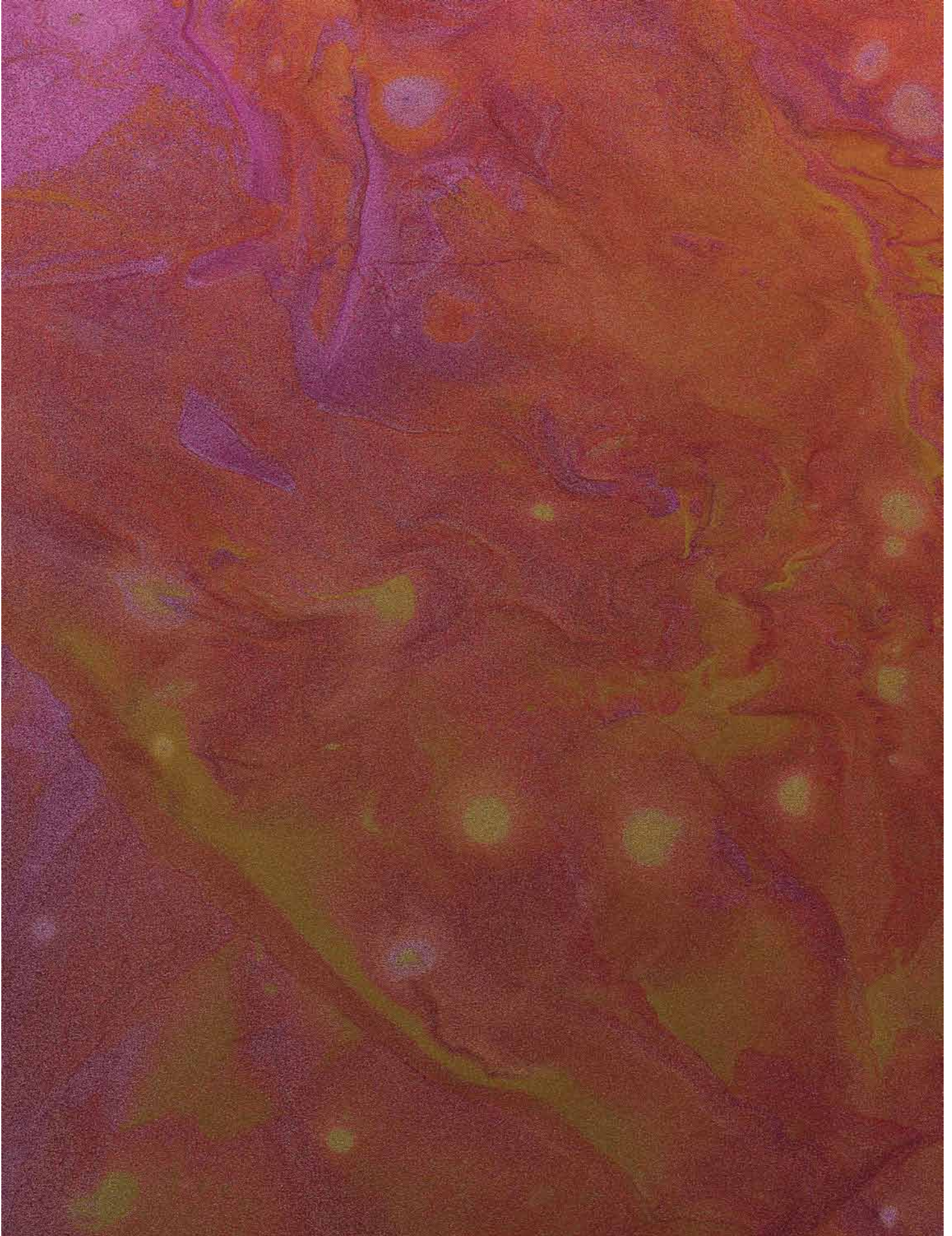


The colour sample are as close to reality as it is technically possible.

Free-hand patterning **Colours:** RAL 470-M and RAL 140-6



The colour sample are as close to reality as it is technically possible.

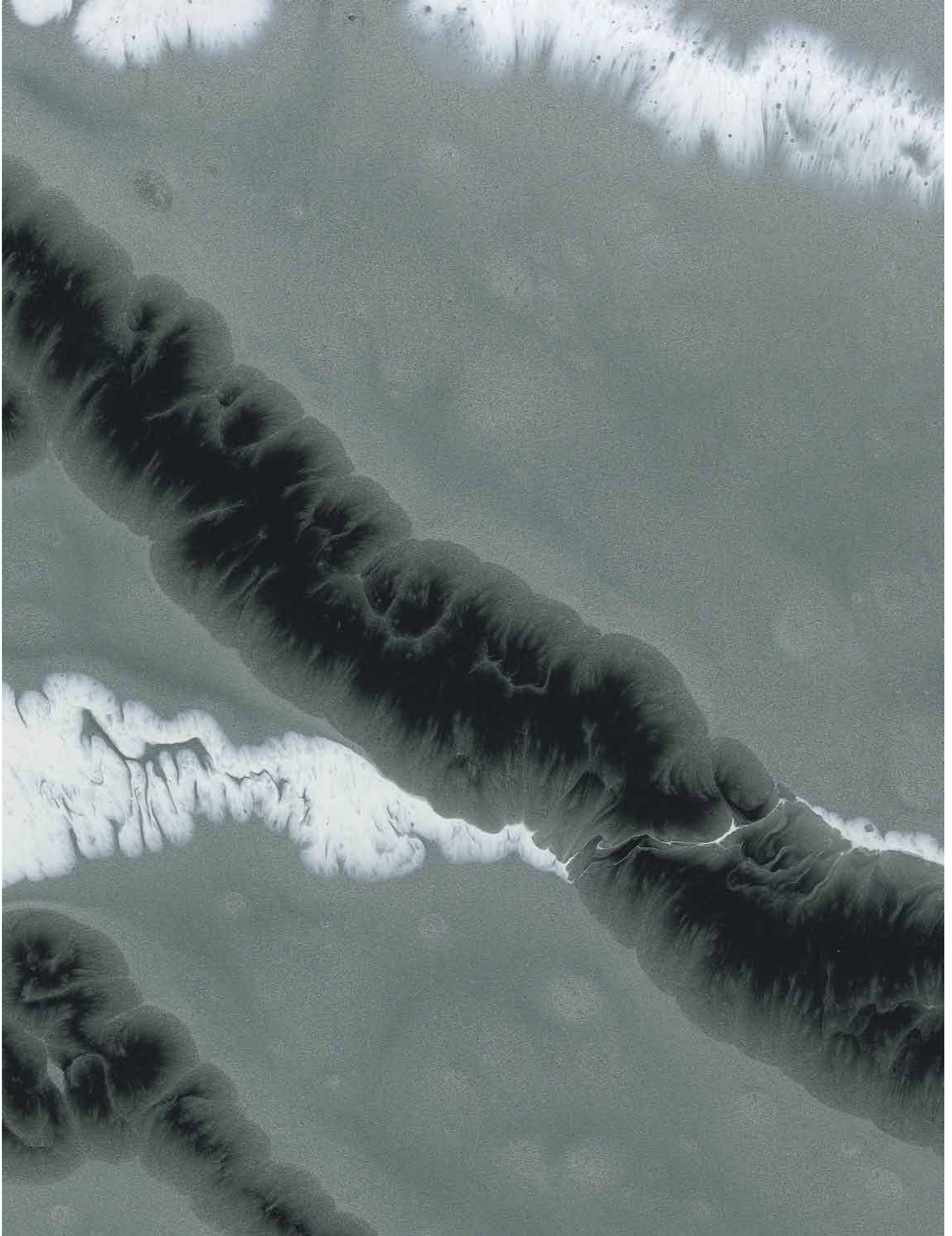




The colour sample are as close to reality as it is technically possible.



Free-hand patterning **Colours:** Temafloor P 300 metallic base paint (background) and Temafloor P 300 white and black (patterns)



The colour sample are as close to reality as it is technically possible.



Temaspeed is a first-class service for industrial paint users. Through our Europe-wide distributor network Tikkurila Oyj provides painting professionals with high-quality products, reliable service and fast deliveries. www.temaspeed.com



TIKKURILA
THE POWER OF COLOURS

Tikkurila Oyj
P.O. Box 53, FI-01301 Vantaa, Finland
Telephone +358 9 857 71 | fax +358 9 8577 6911
info.coatings@tikkurila.com | www.tikkurila.com